

PROJECT TITLE:

**BERKS STREET  
SUBDIVISION**

PROJECT ADDRESS:

**182-188 West Berks Street  
Philadelphia, PA 19122**

SEAL:

© 2015 HARMAN DEUTSCH ARCHITECTURE.  
ALL RIGHTS RESERVED.

CONSULTANTS:

#	DATE	ISSUE / REVISION
1	9/4/2015	ZONING SUBMISSION
2	10/14/15	RVSD. ZONING SUBMISSION

HARMAN DEUTSCH HEREBY RESERVES ITS COMMON LAW COPYRIGHT AND ALL PROPERTY RIGHTS IN THESE DRAWINGS, IDEAS AND DESIGNS. THE INFORMATION ON THIS SHEET IS NOT TO BE REPRODUCED, MODIFIED OR COPIED IN ANY MANNER. THE INFORMATION ON THIS SHEET IS NOT TO BE ASSIGNED TO ANY THIRD PARTY WITHOUT THE EXPRESSED WRITTEN CONSENT OF HARMAN DEUTSCH.

DRAWINGS PREPARED BY:

EQ/GW

DRAWINGS CHECKED BY:

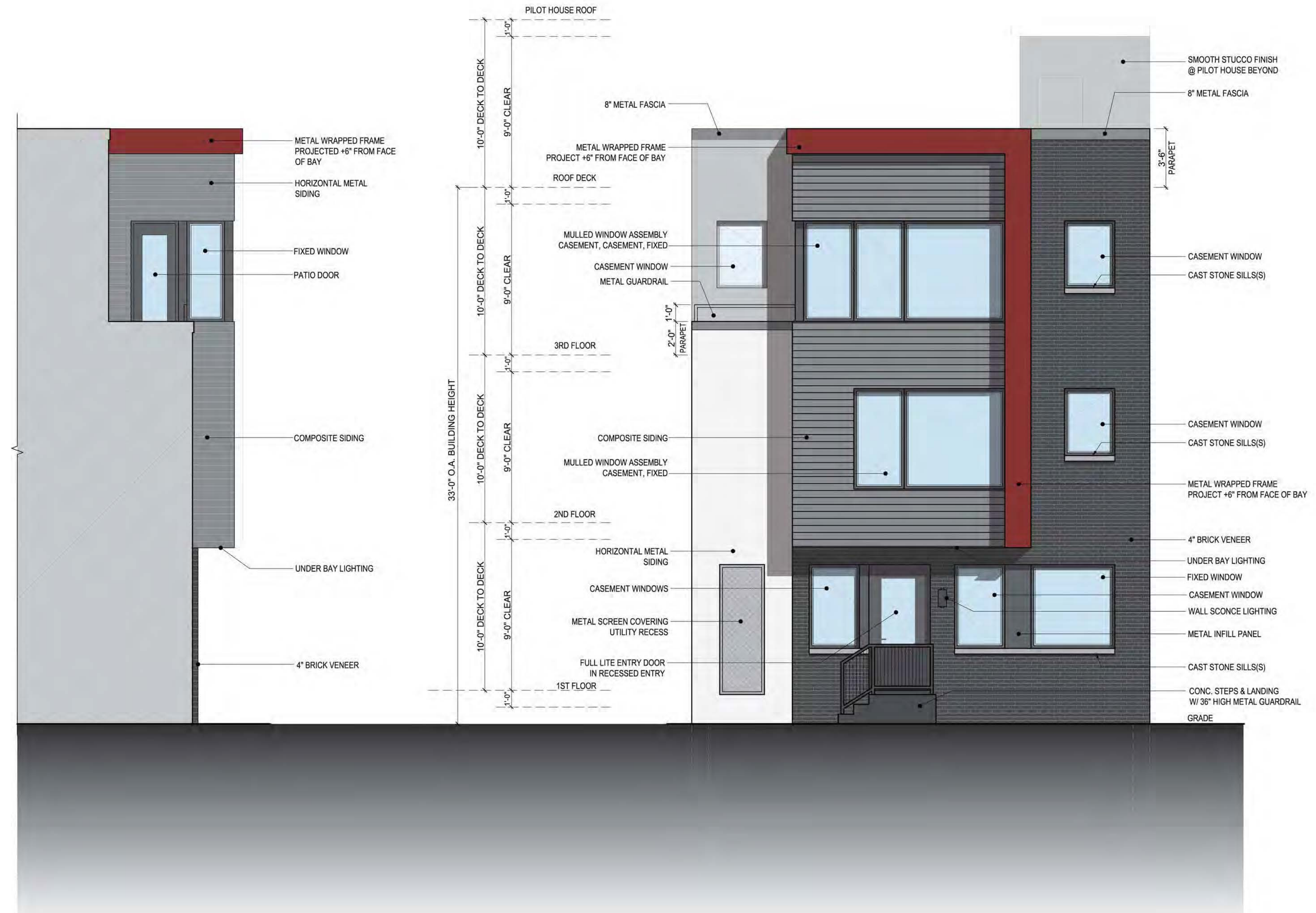
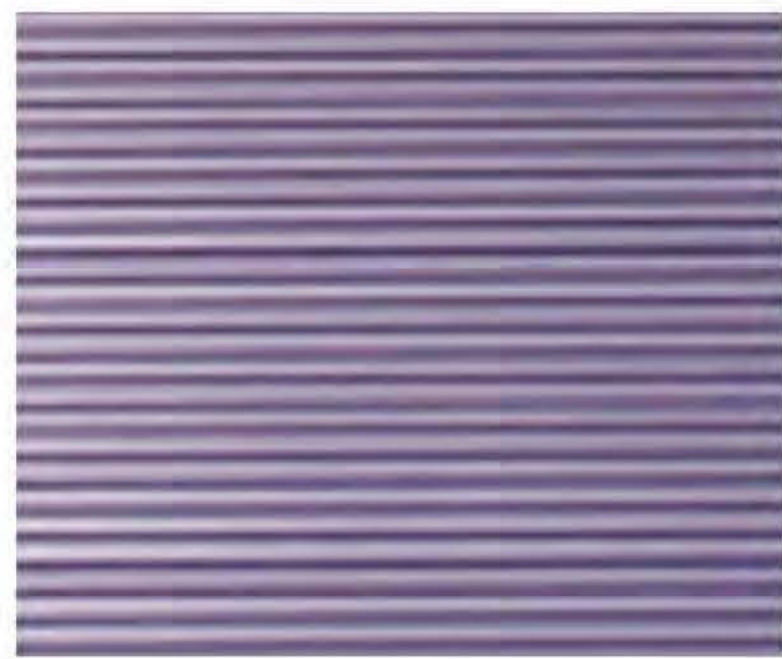
RS/RO

DRAWING TITLE:

**SAMPLE  
ELEVATION**

DRAWING NUMBER:

**SD.8**



1 CROSS SECTION  
SD.8 SCALE: 1/4" = 1'-0"

2 SAMPLE FRONT ELEVATION  
SD.8 SCALE: 1/4" = 1'-0"

PROJECT TITLE:

**BERKS STREET  
SUBDIVISION**

PROJECT ADDRESS:

**182-188 West Berks Street  
Philadelphia, PA 19122**

SEAL:

© 2015 HARMAN DEUTSCH ARCHITECTURE.  
ALL RIGHTS RESERVED.

CONSULTANTS:

#	DATE	ISSUE / REVISION
1	9/4/2015	ZONING SUBMISSION
2	10/14/15	RVSD. ZONING SUBMISSION

HARMAN DEUTSCH HEREBY RESERVES ITS COMMON LAW COPYRIGHT AND ALL PROPERTY RIGHTS IN THESE DRAWINGS, IDEAS AND DESIGNS. THE INFORMATION ON THIS SHEET IS NOT TO BE REPRODUCED, MODIFIED OR COPIED IN ANY MANNER. THE INFORMATION ON THIS SHEET IS NOT TO BE ASSIGNED TO ANY THIRD PARTY WITHOUT THE EXPRESSED WRITTEN CONSENT OF HARMAN DEUTSCH.

DRAWINGS PREPARED BY:

EQ/GW

DRAWINGS CHECKED BY:

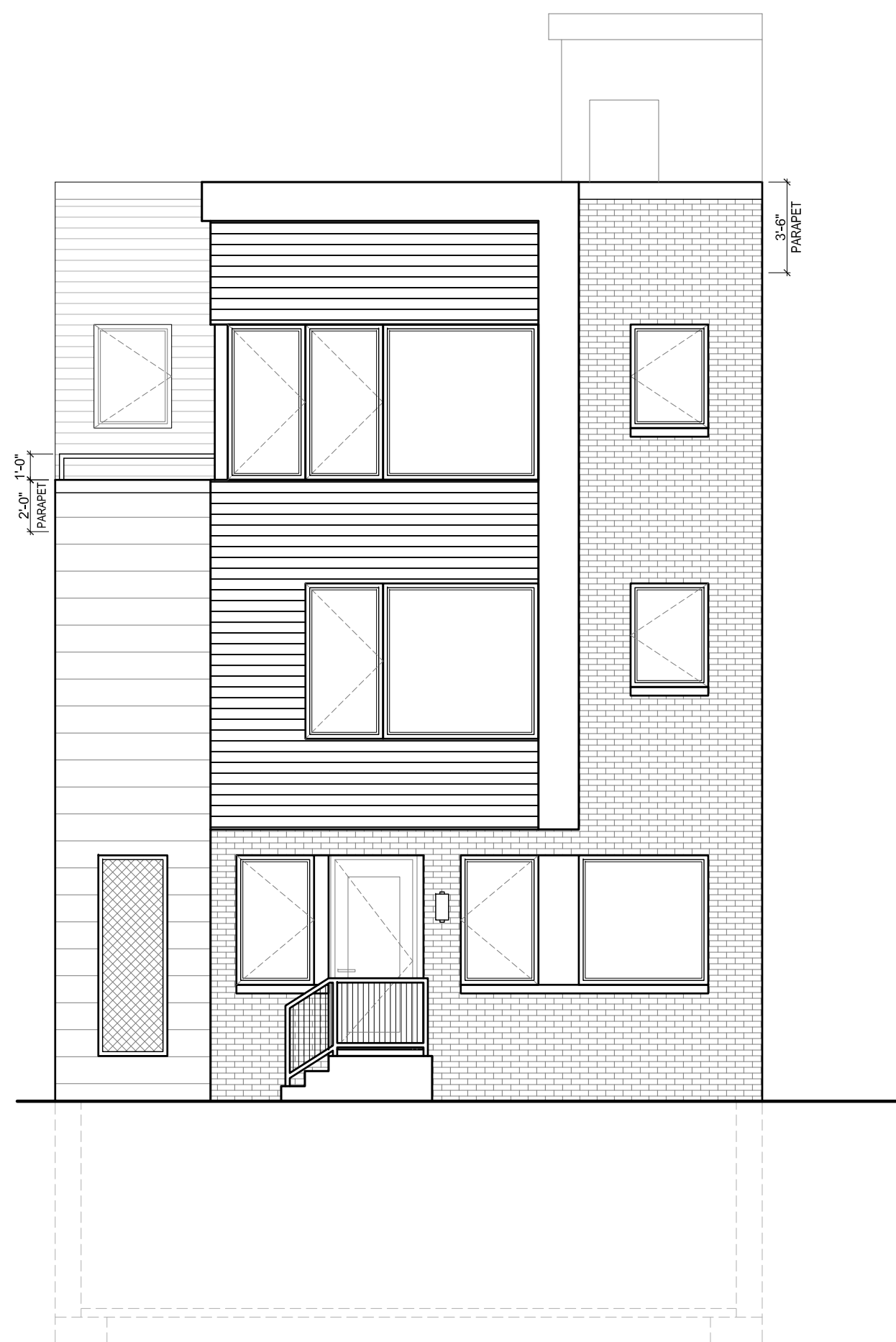
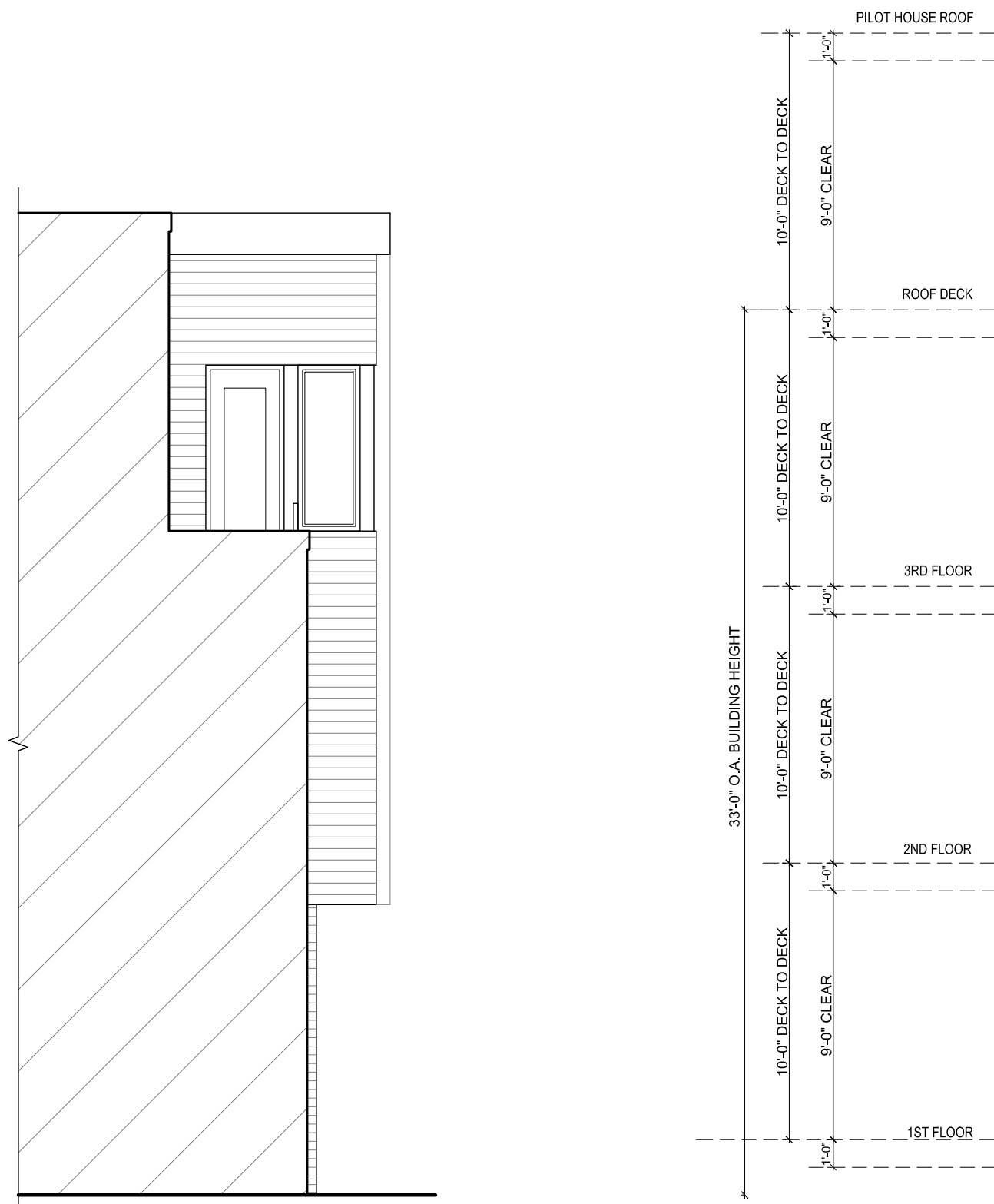
RS/RO

DRAWING TITLE:

**INTERIOR LOT  
ELEVATIONS**

DRAWING NUMBER:

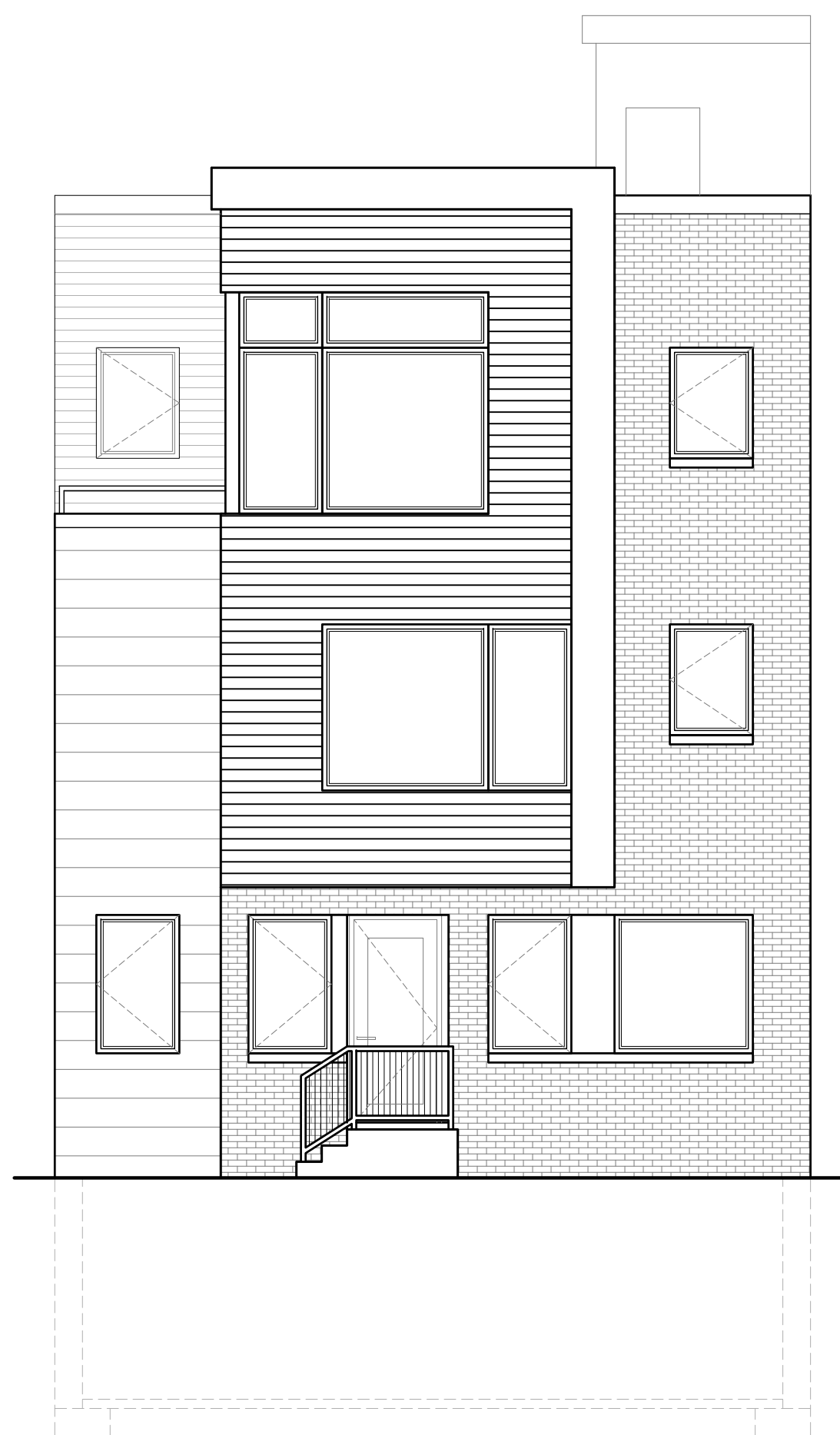
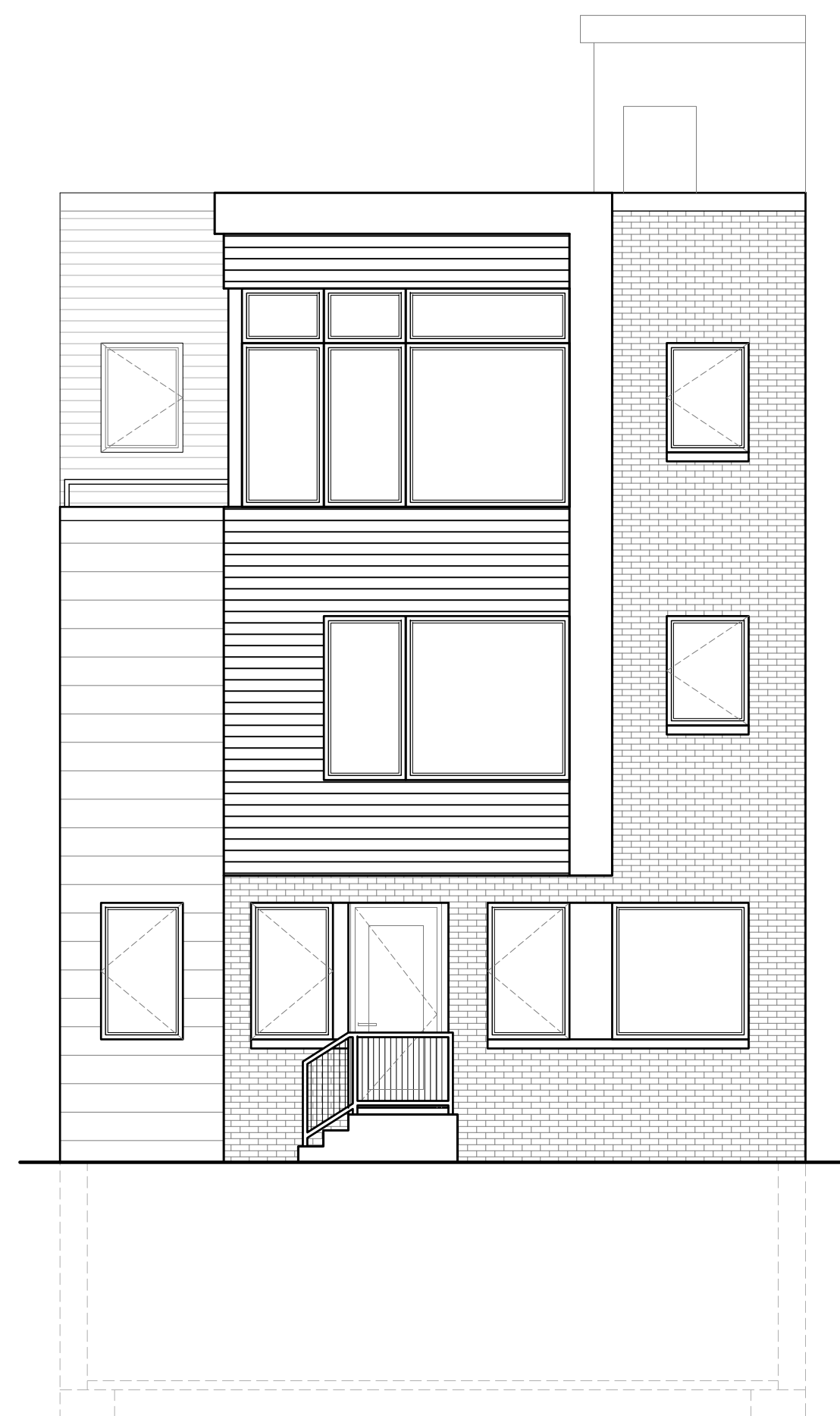
**SD.7**



1 BAY/BALCONY ELEVATION  
SD.7 SCALE: 3/16" = 1'-0"

2 INTERIOR ELEVATION\_TYPE 1  
SD.7 SCALE: 3/16" = 1'-0"

3 INTERIOR ELEVATION\_TYPE 2  
SD.7 SCALE: 3/16" = 1'-0"



4 INTERIOR ELEVATION\_TYPE 3  
SD.7 SCALE: 3/16" = 1'-0"

5 INTERIOR ELEVATION\_TYPE 4  
SD.7 SCALE: 3/16" = 1'-0"